

# DIP FITTINGS

## ADAPTOR & CAP

### ADAPTOR & CAP

DBC80 Dip Cap

DBA80 Bayonet Adaptor

Available in 50mm and 80mm versions. The pressure relieving Dip Cap enables pressure to be released before opening the cap preventing possible operator injury.

DIP ADAPTOR is bayonet type fastening with flange mount.

DTM 80 Venting Mandrel locates between the Dip Adaptor and the dip tube. The dip tube attaches to the lower mounting point, the mandrel features 3 large gauzed holes which allows venting from the dip tube into the compartment ullage space preventing a product geyser when the dip cap is opened.

DIP CAP incorporates pressure relief, actuated when the cap is pressed down to twist-to-release.



### DIP ADAPTORS

DTA80 & DTA65

Standard mil spec camlock tops, with through hole square flanges and 74.5mm diameter lower flange to suit standard 80mm dip tube.

The DTA series bolts directly to the Liquip manhole cover or to separate weld in flanges.

The dip tube is either welded or pop riveted to the round section on the base of the Adaptor.

DTA80 – 80mm Camlock NA80-2AW Camlock Dust Cap

DTA65 – 65mm Camlock NA65-2A Camlock Dust Cap

Suits VOH200, VOH400 & VOH700 series Manhole Covers.

DTA80F

Same as the DTA80 but suitable for the VOH500 series manhole covers.

#### VARIATIONS

DTA80-3 – Same as the DTA80 except it utilizes an integral weld flange for use on low profile tankers.



### FILL ADAPTORS

FTA80 & FTA65

Standard mil spec camlock tops, with through hole square flanges and 74.5mm diameter lower flange to suit standard 80mm fill tube.

The FTA series bolts directly to the Liquip manhole cover or to separate weld flange.

The fill tube is either welded or pop riveted to the round section on the base of the Adaptor.

FTA80 – 80mm camlock NA80-2AW Camlock Dust Cap

FTA65 – 65mm camlock NA65-2A Camlock Dust Cap

Suits VOH200, VOH410 & VOH750 series Manhole Covers.

FTA80F

Same as the FTA80 but suitable for the VOH500 series manhole covers.

#### VARIATIONS

FTA80-3 – Same as the DTA80 except it utilizes an integral weld flange for use on low profile tankers.



### DIP & FILL TUBES

#### DIP TUBES

Dip Tubes are manufactured from aluminium extrusion or in optional stainless steel with a 600 micron (30 mesh) gauze extending the full length of the tube, available in either 1800mm or 2200 mm lengths, these are trimmed to exact length by the customer prior to installation

Also available are end bungs to meet European standards.

DTS3-6 Dip Tube 80mm X 1800mm

DTS3- 2200 Dip Tube 80 mm X 2200mm

#### FILL TUBES

Manufactured from aluminium with solid sides to prevent splashing while filling is taking place.

FTB3-6 Fill Tube 80mm x 1800mm

FTB3-2200 Fill Tube 80mm x 2200mm



Dip Tube DTS

Dip Adaptor

Fill Tube FTB

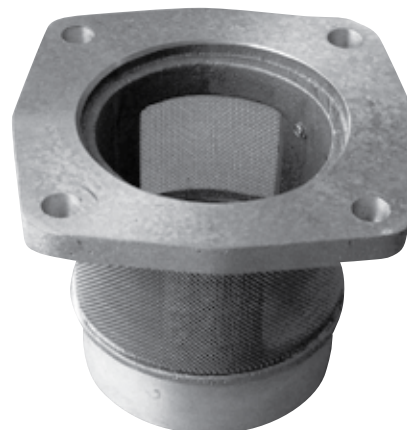


### DIP-STICK INTERLOCK DSI50

For use where operational procedures require that the emergency valve is open prior to a dip reading being taken.

The DSI50 pneumatic Interlock prevents the dip stick from being inserted until a sequence valve, located on the emergency valve, pneumatically operates the locking mechanism on the DSI50.

It has a secondary function of not allowing access to any compartment through the dip stick access point unless the emergency valves have been activated.



### DTM80

The venting mandrel fits into the dip hole and its flange is sandwiched underneath the dip adaptor on to the manhole cover. Dip tube is attached to the boss on the mandrel by welding or pop-rivetting.

The mandrel incorporates three large port holes for venting from the normal ullage space. This feature eliminates any possibility of a liquid geyser from the dip hole due to internal pressure.

# DIP FITTINGS

## STICKS & ACCESSORIES

### DIP/FILL REMOTE MOUNT PAD

Dip & Fill remote mounting pads can be used on tankers where manhole covers do not have integral dip & fill points. They can be welded direct to the tanker walkway to enable the use of dip & fill points.

Available in 4 configurations

DP3.0-1A - Single flange for either dip or fill in Aluminium

DP3L - Double flange for both dip and fill points in Aluminium

DP3S - Double flange for both dip & fill points in Stainless Steel

DP3M-1 - Single Flange for either dip or fill in Mild Steel



### DIP TUBE GUIDE DTG SERIES

Dip Tube guides are used to support the bottom of the dip stick tube preventing the tube from moving or swaying while the tanker is in motion.

They are welded to the floor of each compartment directly below the dip adaptors located on the tank top.

DTG3-R - Aluminium with integral striker pad and elastomer bearing

DTG3-R-AT - Aluminium with integral striker pad and Teflon bearing

DTG3-M - Mild Steel, no striker pad and plain bore

DTG3-S - Stainless Steel, no striker pad and plain bore



### TUBE STEADY - TS SERIES

Used when a dip and fill tube are both used.

The TS3X3 steady braces the fill tube off the dip tube, which has been securely fixed in position using one of the dip tube guides.

Aluminium construction

Suitable for use with VOH400 Series manholes and DP weld pads only.



### ANTI-RATTLE DIP STICK DSS 21, DSR 21

DSR 21

Is a simple polyurethane ring which locates on the top of the dip stick and prevents it rattling within the dip tube while the tanker is in motion. This reduces wear on the dipstick and the graduations engraved into it.

DSS 21

Is a ring pull which attaches to the top of the dip stick enabling easy retrieval of the stick when checking compartment contents. It is also compressed by the dip cap while in transit preventing the dip stick from bouncing within the compartment.

