

FUELLING SOLUTIONS

BY LIQUIP

SPARE PARTS CATALOGUE

www.liquip.com



FUEL SAMPLING

EPOXY LINED CONTAINER

These re-usable double-coated epoxy-lined containers have been tested in accordance with the approval procedure defined in ASTM Standard Practice D-4306.

They are made specifically for transporting samples of jet fuel for laboratory testing.

The cap is epoxy coated and can be safety wire sealed while the new design reduces the amount of fuel and dirt particles trapped in the chine when pouring.

Ordering Information:

Part No	Description
TL-2935B-1	1 gallon can
TL-2935A-5	5 gallon can
TL-2935-2A	Shipping box to suit 1 gallon can
TL-2935-3	Shipping box to suit 5 gallon can



COLLECTOR TANK

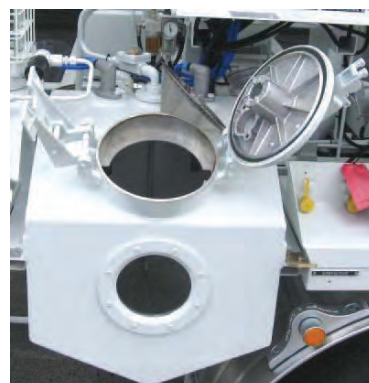
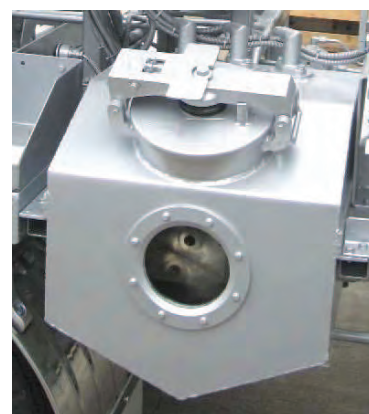
These 90 Litre Liquip aviation fuel Collector / Recovery / Slops Tanks are typically used on aviation Refueller and Hydrant Dispenser vehicles. They collect / store fuel from fuel sampling (which is typically manually dumped in through the hatch or from the ALJAC Sampler, if fitted), from system depressurisation process, from the show-flow / air eliminator etc. or from nozzle drain adaptors.

The Collector Tank is drained / evacuated by one or more procedures: by an evacuation pump (standard is hydraulically-driven, but can be air-operated diaphragm type (if specified) or manually via the tank's drain valve.

These Collector Tanks are based around a "standard" (base model) 90 litre capacity tank to which several components may be added, creating several variants.

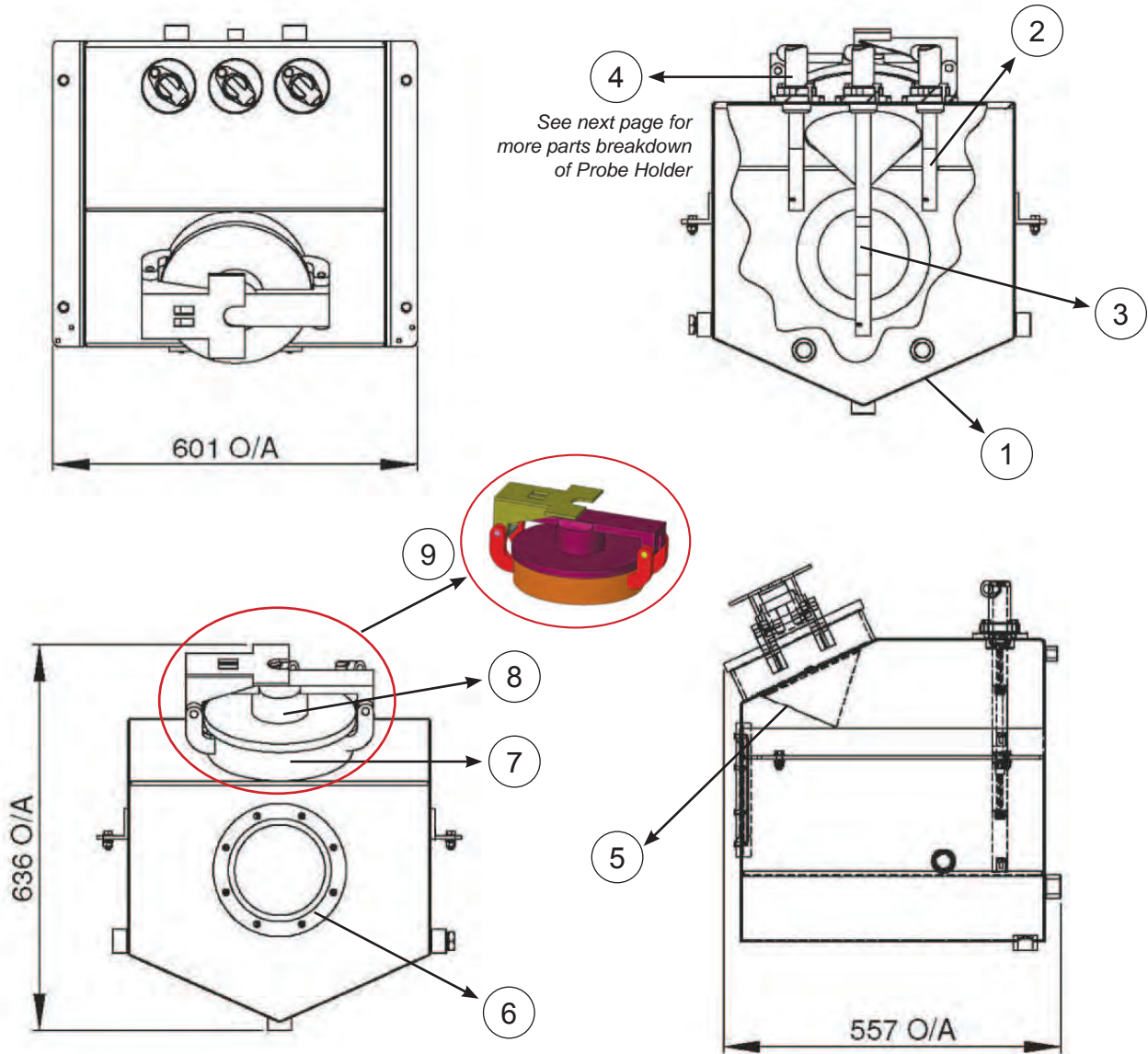
As these 90 litre tanks are now a standard, on both Dispensers and Refuellers, typically the only optional additions on the 90 litre versions would be with or without:

- Nozzle Drain - Carter 61528B Aircraft (A/C) Adaptor.
- Sight Glass (porthole contents level gauge).
- Internal Level Sensors / Probes / Float Switches for Low, High or Overfill sensing / warning.
- Some "special builds" may have other non-standard components such as external level gauges etc.
- *CONICAL STRAINER. The CS100ST is a 100 mesh Stainless Steel conical strainer that fits into the tank hatch



COLLECTOR TANK

Ordering Information:



Item No	Part No	Description	Qty
1	2000-01-00	Collector Tank - Bare	1
2	2000-04-00	Probe Assembly - High & High/High	2
3	2000-04-01	Probe Assembly - Low Level	1
4	VOH200-5	Probe Holder	3
5	CS100ST	Conical Strainer	1
6	2000-03-00	Standard Porthole	1
7	EH231-1A	Aluminium Coaming Assembly	1
8	VOH500-32LP	Aluminium Emergency Vent Low Pressure	1
9	EH231	Inspection Hatch Assembly	1

MILLIPORE ADAPTOR

The chrome-plated dry break connection is available with a 3/8" BSPP and includes a dust cap. Mainly used for fuel sampling, they are also suitable for a variety of applications including pressure checking and gauge testing.

For pipework, the extension adaptor length of the unit is suitable for 6" pipework and can be cut down and re-angled for smaller pipe diameters.

Ordering Information:

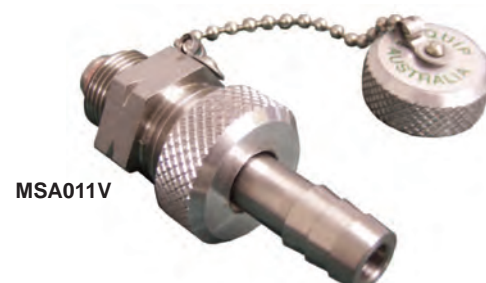
Part No	Description
MSA011V	Adaptor 3/8" BSPP
MSF100	Mating female half to 3/8" hose tail
AT104	Adaptor probe assembly



MSA011V

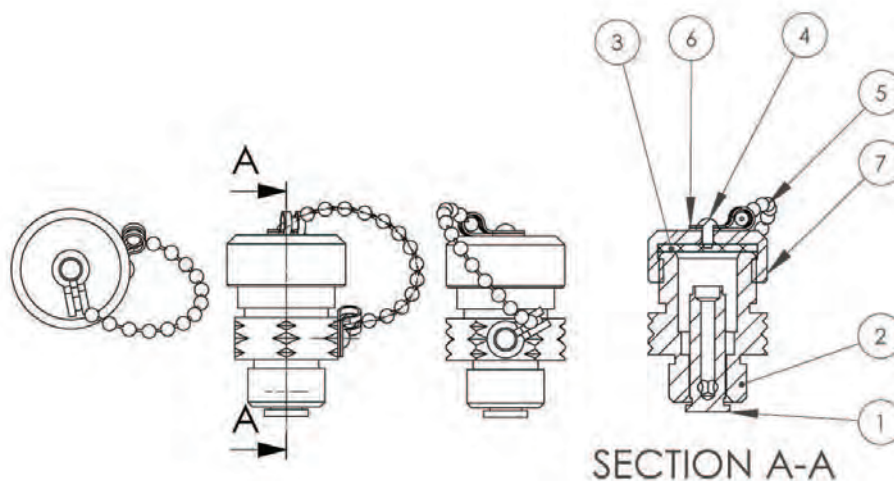


AT104



MSA011V

MSF100



Parts List

Item No	Part No	Description	Qty
1	MSA010-2	Millipore Adaptor	1
2	MSA011-1	Millipore Sampling Adaptor Body	1
3	6090	Seal - Cap	1
4	6579 (2)	Hammer Drive Screws	2
5	7153 (2)	Chain Bead	1
6	7154	Clip - Bead Chain	2
7	MSA010-3 (2)	Cap for Millipore Adaptor	1

ALJAC SAMPLER

environmentally acceptable, operationally efficient and safe, eliminating any product loss

Aljac Closed Circuit Samplers have been designed to permit visual examination and full quality control checking of fuel samples within a closed system. A fuel sample is taken by opening the inlet valve and filling the sampler. Visual examination can be completed and the various checks carried out. When the checks are complete, the drain valve is opened and the sample is released into the slops tank.

The Basic Sampler comprises a glass tube, with hinged, vented cover, a cone-down epoxy coated aluminium base, and drain valve with easily operated handle. Fuel enters through a tangential port to promote vortexing which concentrates any impurities.

Accessories are available to permit all currently established methods of water detection, together with density and temperature readings.

Internally: A holder for either Shell Water Detector (SWD) syringe or the Exxon Hydrokit, for suspended water checking.

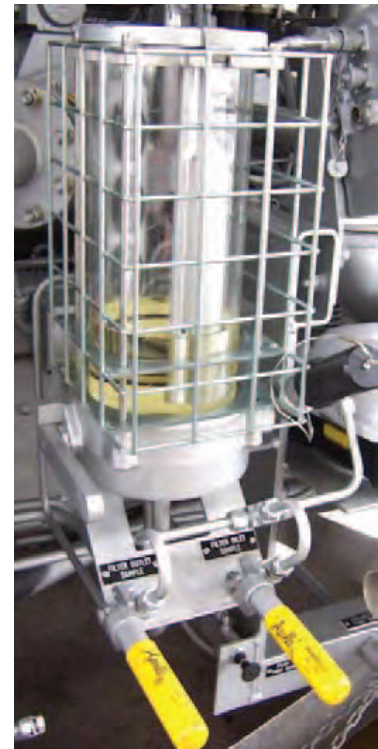
Externally: A fitting for the SWD syringe at the inlet to the Sampler, adjustable to any angle for convenience. A sample from this point will accurately reflect the condition of the product from which the sample is being taken.

Operation

A fuel sample is taken by opening the inlet valve and filling the sampler. Visual examination can then be completed and the various checks carried out depending on the accessories fitted. When the checks are complete, the drain valve is opened and the sample released either to a dump tank or back to storage.

Features

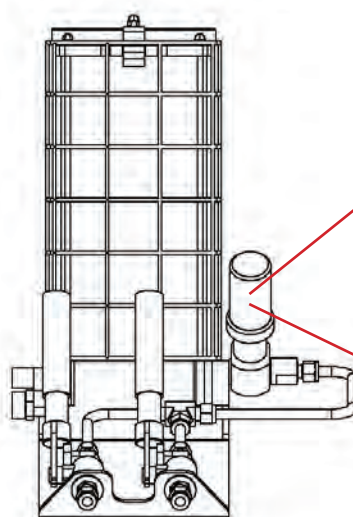
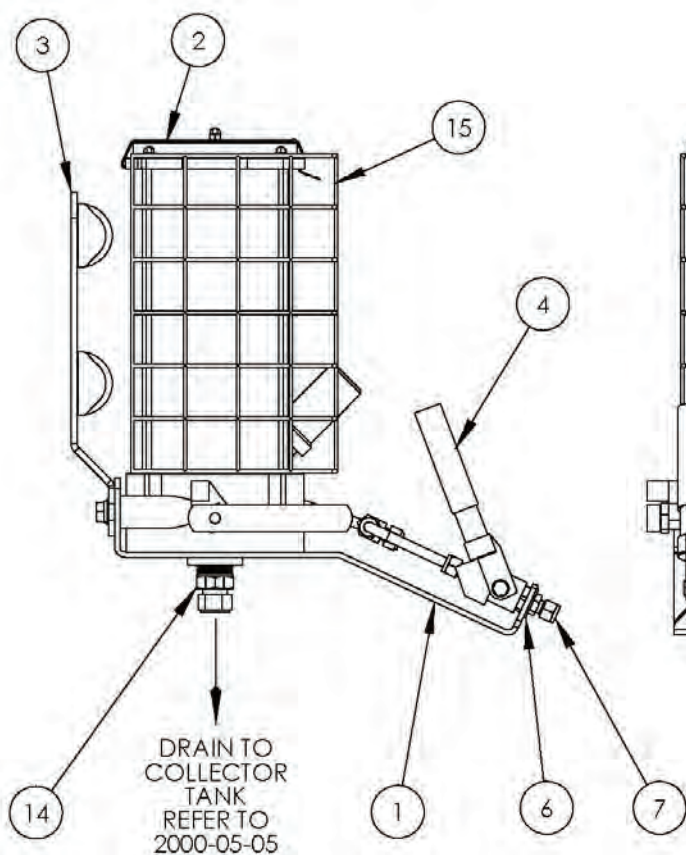
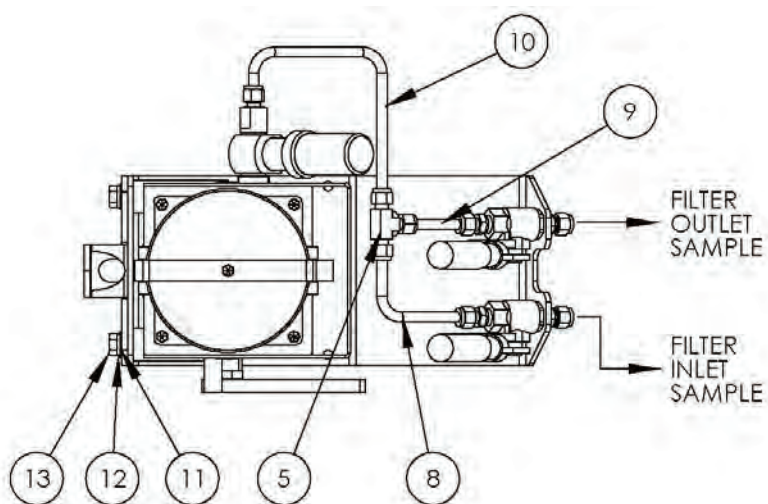
- Full visual examination
- Elimination of spillage
- Drain to dump/slop tan
- Accessible for internal cleaning
- Suits Density measurement
- Suspended water checking
- Temperature measurement
- Inlet connections: 3/8
- Outlet connections: 1"



ALJAC4

ALJAC SAMPLER

Ordering Information:



M060
Shell Water Detector Capsules
(box of 80)



M105
5ml Re-suable syringe

ALJAC SAMPLER

Ordering Information:

Item No	Part No	Description	Qty
1	2000-05-01	Bracket Mounting Aljac Assembly	1
2	ALJAC4	Aljac Assembly	1
3	2000-05-04	Post Light Assembly	1
4	8476	Valve Ball 3/8"NPT Apollo	2
5	9049	Tee Tube 3/8" SS	1
6	8622	Washer Flat 16mm ZP	2
7	8648	Fitting Tube Comp. Straight 3/8"NPT x 3/8"T SS	5
8	2000-05-06	Tube 3/8" SS	1
9	2000-05-07	Tube 3/8" SS	1
10	2000-05-08	Tube 3/8" SS	1
11	8620	Washer Flat 12mm ZP	2
12	8618	Washer Spring 12mm ZP	2
13	ZZ0151	Bolt Hex HD M12-1.75P x 30mm ZP	2
14	9036	Fitting Tube Comp. Straight 1"BSP x 3/4"T SS	1
15	2000-05-10	Guard Mesh Frame	1

LIQUIP SALES QLD

730 MacArthur Avenue Central
Pinkenba QLD 4008

Tel: +61 7 3633 9100

Fax: +61 7 3260 1732

email: sales@liquip-qld.com.au

Website: www.liquip-qld.com.au

Leader in refuelling technology and solutions

LIQUIP