

Parking adaptors are used in the terminal to store loading arms and other bottom load equipment while not in use. Liquip advocate the use of parking adaptors for safety and cleanliness.

Using parking adaptors reduces the risk of the vehicle leaving the bay with one or more gantry connections still attached. Parking adaptors fitted with electronic proximity sensor interlocks and air interlocks can help to prevent this dangerous accident by interlocking the loading arms and other connections with the Terminal Automation System, thereby reducing the risk of accidental damage.

An additional benefit of parking adaptors is that drips from the API coupler can be contained and returned to a central collection point, keeping the loading area clean and safe.

PA200

The PA200 is a simple parking adaptor for API couplers complying with API RP1004. It prevents the arms from swinging across the loading bay while not in use.



APIPA

The APIPA complies with API RP1004 and is used to park API bottom loading couplers. The coupler is connected to the parking adaptor when not in use and if fitted with an integral proximity sensor holder. The sensor is actuated to enable electronic system interlocks. The adaptor can also collect drips for draining off to a central drain collection point.

Note: proximity sensors not included. Order separately to ensure compatibility with existing Terminal Automation System.



PA100 SERIES PARKING STANDS

These API parking stands are available with either straight or angled adaptors. They provide the ability to park bottom loading arms, and if fitted with an integral proximity sensor will actuate electronic system interlocks.

The stand is designed to conform with API bottom load envelope dimensions.



LOADING ARM

PARKING ADAPTORS

STORAGE TANK SYSTEMS ELECTRONIC REGISTERS OVERFILL PROTECTION FLOATING SUCTIONS PARKING ADAPTORS LOADING EQUIPMENT SPOOLS, HOSES & ACCESSORIES SWIVELS LOADING ARMS

SPS100

The SPS100 provides a no-mess parking position for top load spear type loading arms complete with a provision for a proximity sensor.

Integrated into the existing terminal automation system, the proximity sensor signal can provide an effective system interlock to prevent the vehicle leaving the loading bay if the loading arm is not properly parked at the completion of loading.

The aluminium construction incorporates a mounting bracket and provides a solution for drip collection. Accumulated product may be piped away to a central collection point.

MATERIALS

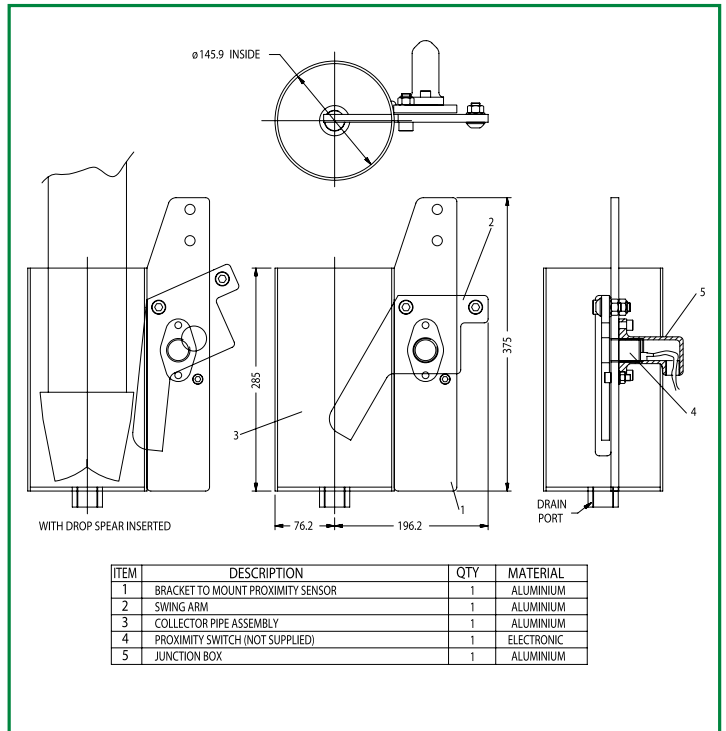
All aluminium except for zinc plated steel fasteners

MOUNTING

Mounts onto gantry framework using 12mm (1/2") bolts and should be mounted where drop spear can come to rest inside container and remain unobtrusive.

WEIGHT

2.16kg



VCFPA

The VCFPA accommodates the VCF075W and VCF500 vapour collection couplers, and others complying with industry regulations.

It comes with provision for a proximity sensor to provide an electrical position interlock, and incorporates a drain port to drain off any condensed vapour that may have accumulated within the coupler.

